



**BAUROMAT**

Robotic & Automation Systems Integrator

# **BAURO-Arc**

**Robotic Arc Welding Systems**





# Strike An Arc

With a huge variety of arc welding variations: from traditional **MIG** and **TIG** to more concentrated arcs such as **Plasma** and **Laser** or lower temperature aluminium welding techniques such as **CMT (Cold Metal Transfer)**, whatever material is needing to be arc welded, Bauomat's experience will ensure that there is an automated solution for you.

From heavy fabrications, clean automotive welds or quality aerospace & nuclear parts, Bauomat has provided welding solutions for all types of techniques. Each method of arc welding has its own benefits, with Bauomat's welding expertise guiding all customers down the correct path for quality results.

Welding trials are also available to not only help refine a welding process, but to give the customer confidence in the automation itself.

Book your trial today.



## Our Suppliers



Bauomat is known for its expertise in welding and has been providing a variety of welding solutions for over 20 years.

This has led to it building strong working relationships with some leading names in the welding industry, guaranteeing top quality results and competitive prices for all areas of the industry.



#Day1Integration  
#BAUROArc



## Laser Seam Tracking

Create a higher quality and more consistent weld with laser seam tracking. Using active seam detection tracking to scan the edge offset of the material's joint, laser seam tracking ensures precision welding each and every time.

## Gas Saving Devices

More economical, more precise and perfectly suitable for the requirements of industry 4.0, gas saving devices help regulate the gas flow in real time and in synchronization with the welding current to reduce unnecessary gas waste, saving up to 60%.

## Fume Extraction

The health and safety of your workforce is of the utmost importance. With new legislation coming into play surrounding the dangers of welding fumes, quality extraction needs to be an essential item.

## Torch Cleaning

To maintain quality welds, and prolong torch life, a torch cleaning station is a vital robot system component. With options for wire cutting and torch cleaning, these stations can easily be programmed into part of the day-to-day cycle.



## More Than Welding

All BAURO-Arc welding systems will include a welding wire feeder, cable loom and torch crash detection (dependant on the torch) when purchased as part of a complete solution.

What isn't included, but can be offered as part of a wider welding service, is a range of accessories. Sourced from a variety of suppliers. These accessories are a great way to increase your levels of automation and get you running to a more efficient level.

For an extensive list of further welding accessory options, and to discuss trials, contact our sales team.



**BAUROMAT**  
Robotic & Automation Systems Integrator

[www.bauromat.com](http://www.bauromat.com)

+44(0)1952 951689

# BAURO-Arc Compact

Single Static Table

Prices Starting From  
**£45,000**

BAURO-Arc compact is Bauromat's smallest welding system and is the ideal introduction to automation. With a footprint starting from just 4.4m<sup>2</sup>, BAURO-Arc Compact includes everything needed to start your automation endeavour, and can be a valuable training tool.

## Ideal For:

- Part prototyping
- Small sized, low volume parts
- Automation training
- Schools & Universities



## Includes...

A single static table is the ideal choice for low production runs or to trial and learn new automation techniques.

Fully enclosed by quality aluminium guarding, all BAURO-Arc Compact systems include an industrial welding robot, welding power source, full safety, fume hood and service door.

Upgrades available on request.



#Day1Integration  
#BAUROArc

# BAURO-Arc 200 M

## Manual Turntable

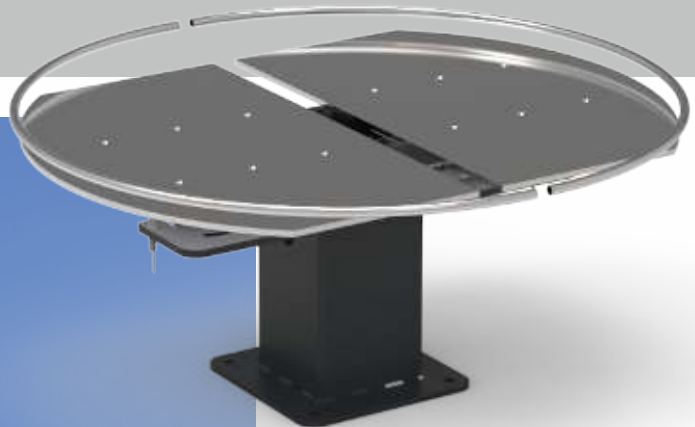
Prices Starting From  
**£50,000**



With a two-station manual/semi-automatic turntable, BAURO-Arc 200 M is the smallest and most cost effective welding system in the BAURO-Arc 200 family. Designed to maintain the BAURO-Arc Compact's small footprint, the 200M is a great way to quickly increase efficiency.

### Ideal For:

- Sporadic volumes
- Small/medium batch sizes
- Automation training



## Includes...

The T manual/semi-automatic turntable features two-stations, both capable of up to 100kg. With a locking system in place, the turntable can only be moved when the welding cycle is complete.

The system will be fully enclosed with machine guarding and feature an industrial robot, welding power source, full safety, fume hood and service doors.

Upgrades available on request.



**BAUROMAT**  
Robotic & Automation Systems Integrator

[www.bauromat.com](http://www.bauromat.com)

+44(0)1952 951689

# BAURO-Arc 200P

Powered Turntable

Prices Starting From  
**£65,000**

The BAURO-Arc 200P features an automatic turntable controlled via an external servo axis. Programmed as part of the whole system, when running at fully capacity, the powered turntable option allows for greater efficiency.

## Ideal For:

- High volumes
- Small sized automotive assemblies



## Includes...

The P powered turntable features two-stations, both capable of 500kg per side. With full safety in the whole system, the turntable only indexes when it is safe to do so.

The system will be fully enclosed with machine guarding and feature an industrial robot, welding power source, full safety, fume hood and service doors.

Additional robots and alternative access available on request.



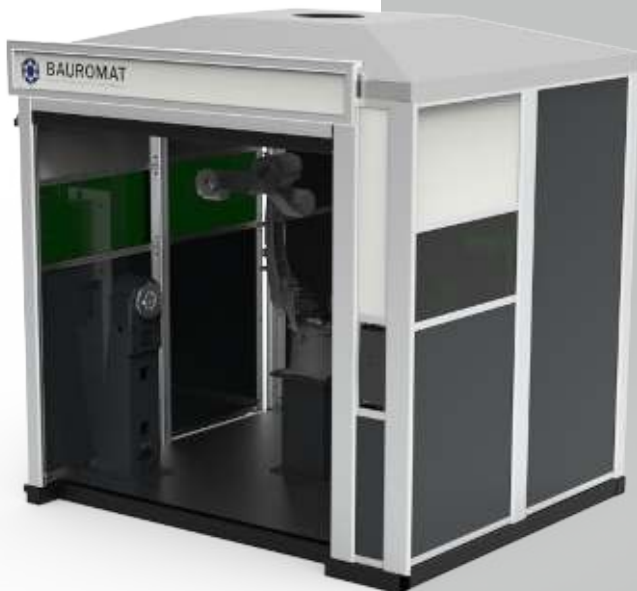
#Day1Integration  
#BAUROArc



# BAURO-Arc 500

Head & Tail Stock

Prices Starting From  
**£70,000**



Easily scaled up to feature multiple stations, the BAURO-Arc 500 is a welding system that features a Head & Tail stock manipulator with coordinated motion. Its small footprint makes it ideal for smaller workshops

## Ideal For:

- Cylindrical parts
- 360° welds
- Pipes & tubing assemblies
- Welding both sides of a component

## Includes...

With coordinated motion the HT Head & Tail stock manipulator can be used for long parts and full rotation welding.

The system will be completed with full safety, modular aluminium guarding, industrial robot, fume hood and welding power source.

Additional stations and further options are available.



**BAUROMAT**  
Robotic & Automation Systems Integrator

[www.bauromat.com](http://www.bauromat.com)

+44(0)1952 951689

# BAURO-Arc 200 TS

Servo Driven Turntable

## Price on Application

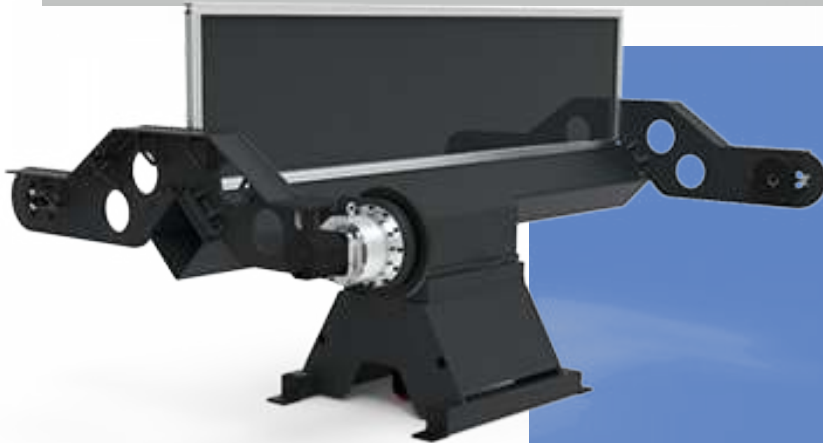
The largest of the BAURO-Arc 200 family, the BAURO-Arc 200TS provides a servo-driven two-station positioner with additional axes for 180° part indexing making it the perfect solution for large parts that require welding on both sides.

### Ideal For:

- High volumes
- Large industrial assemblies
- Welding required on both sides.



Shown without fume hood



## Includes...

With two external axes, the servo-driven TS turntable has capacity for up to 1,000kg per side.

Surrounded by aluminium guarding, the BAURO-Arc 200TS features the latest safety requirements and includes an industrial robot, welding power source, fume hood and service doors.

Additional robots and alternative access available on request.



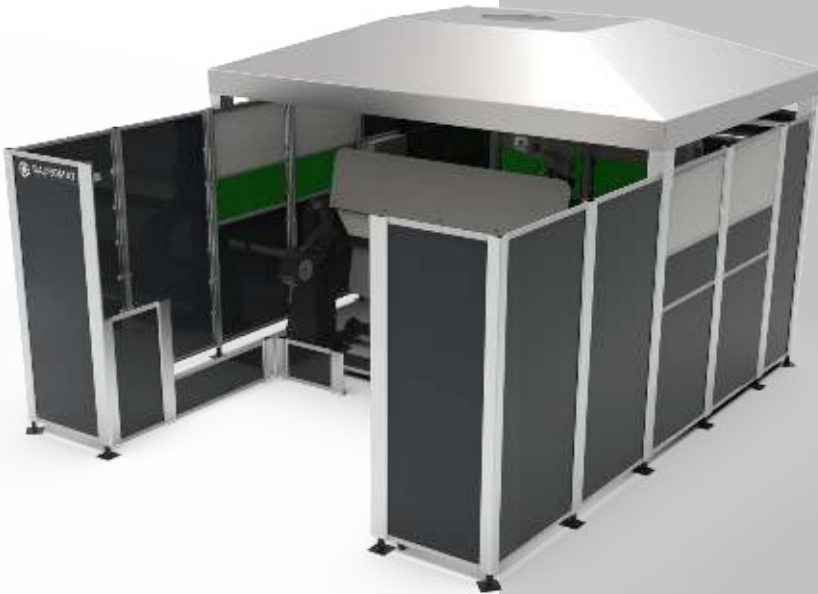
#Day1Integration  
#BAUROArc



# BAURO-Arc 300

Ferris Wheel

**Price on Application**



The Bauromat BAURO-Arc 300 cell is an automated welding system based around a two-station indexing ferris wheel turntable that manipulates the product for the robot to weld.

## Ideal For:

- Cylindrical parts
- Pipes & tubing assemblies
- Long assemblies with welding on both sides
- Larger industrial assemblies

## Includes...

For lengths between 1,200 - 4,000mm, the Ferris Wheel turntable features two-axes enabling long cylindrical parts to be welded in coordination with the robot.

The system will be completed with full safety, modular aluminium guarding, industrial robot, fume hood and welding power source.

Further options available on request.



**BAUROMAT**  
Robotic & Automation Systems Integrator

[www.bauromat.com](http://www.bauromat.com)

+44(0)1952 951689

# BAURO-Arc 400

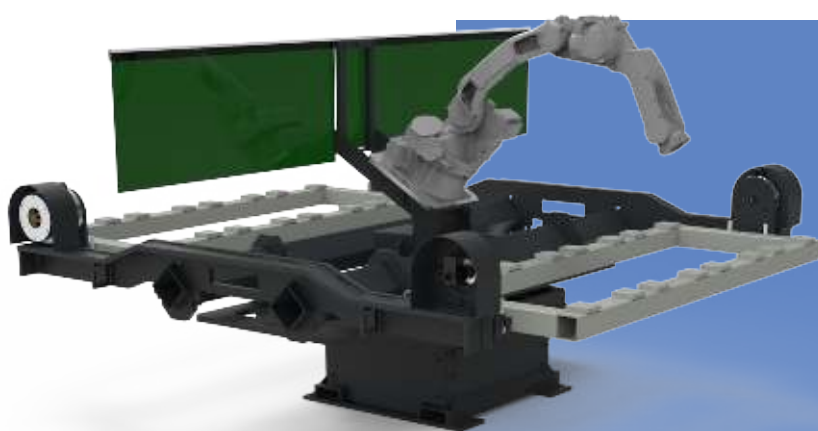
Centre Mount

## Price on Application

Boasting a smaller footprint than traditional 1,000kg systems, the BAURO-Arc 400 is designed around a centre mounting turntable, creating a greater working envelope without losing valuable floor space.

### Ideal For:

- High volumes
- Large, complex industrial & automotive assemblies
- Welding required on both sides
- Large volume of welding  
(additional robots available on floor and positioner)



Dual process robots available with CMT positioners

## Includes...

The CMT, centre mount turntable puts the robot above the parts, optimising reach and taking up less floor space. With two-stations it can take up to 1,000kg per side.

The system will be completed with full safety, modular aluminium guarding, fume hood, industrial robot and welding power source.

Further options available on request.

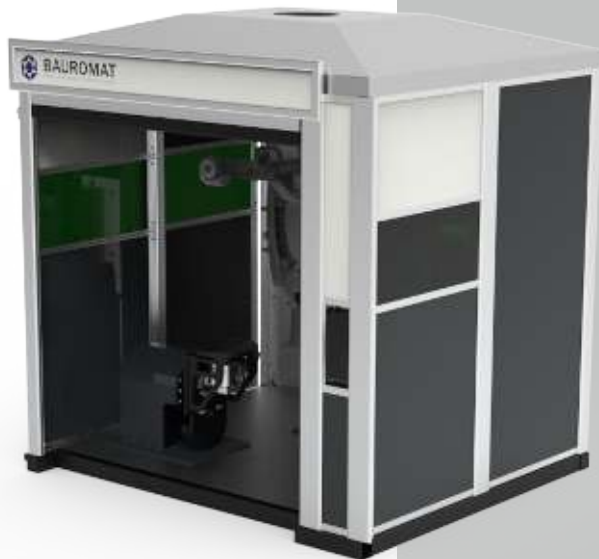


#Day1Integration  
#BAUROArc

# BAURO-Arc 800

Tilt & Turn

**Price on Application**



Easily scaled up or down depending on the size of the required positioner, the BAURO-Arc 800 system is a flexible solution featuring a tilt & turn manipulator. With options for small footprints, the BAURO-Arc 800 can include positioners capable of up to 20 tonnes.

## Ideal For:

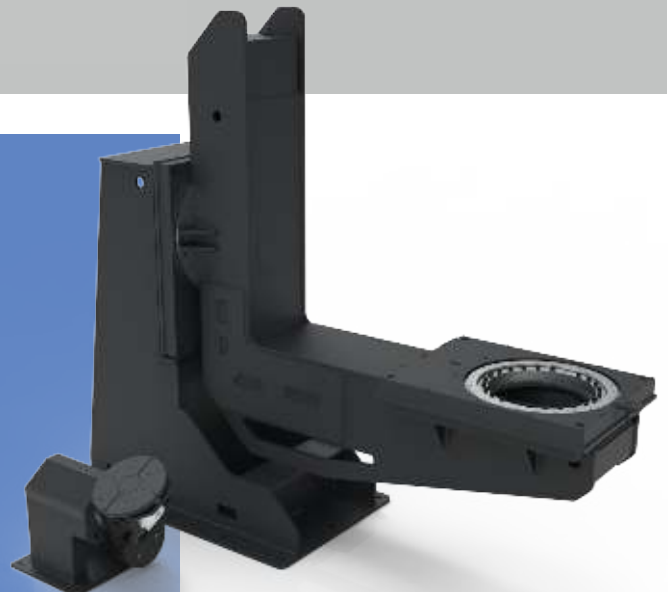
- Box type applications
- Exhaust welding
- Large and small applications

## Includes...

From small intricate parts to huge 20 tonne assemblies, the TT, tilt & turn manipulators allow for a whole host of parts to be welded. With coordinated motion, the welds will be consistent time after time.

The system will be completed with full safety, modular aluminium guarding, industrial robot, fume hood and welding power source.

Additional stations and further options are available.



**BAUROMAT**  
Robotic & Automation Systems Integrator

[www.bauromat.com](http://www.bauromat.com)

+44(0)1952 951689



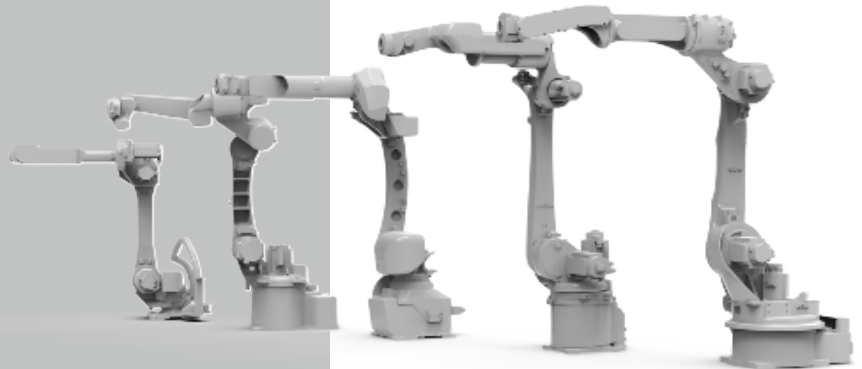
# Welding Robots?

## We've Got You Covered

Arc welding robots come in all shapes and sizes, with varying reaches and payloads. Working closely with all leading robot manufacturers, Bauomat not only ensures that the right robot is selected for the job, but that the customer will receive full service and support from some of the leading names in the industry.

What's more, training on all robots brands is available as part of the system cost, with additional training and refresher courses available at all times.

**ABB**  
**FANUC**  
 **Kawasaki**  
**KUKA**  
**YASKAWA**



## Bauomat (UK) Limited

Stafford Park 6  
Telford  
Shropshire, UK  
TF3 3AT

[www.bauomat.com](http://www.bauomat.com)  
[info@bauomat.co.uk](mailto:info@bauomat.co.uk)  
+44(0)1952 951689



#Day1Integration  
#BAUROArc



**BAUOMAT**  
Robotic & Automation Systems Integrator

[www.bauomat.com](http://www.bauomat.com)  
+44(0)1952 951689